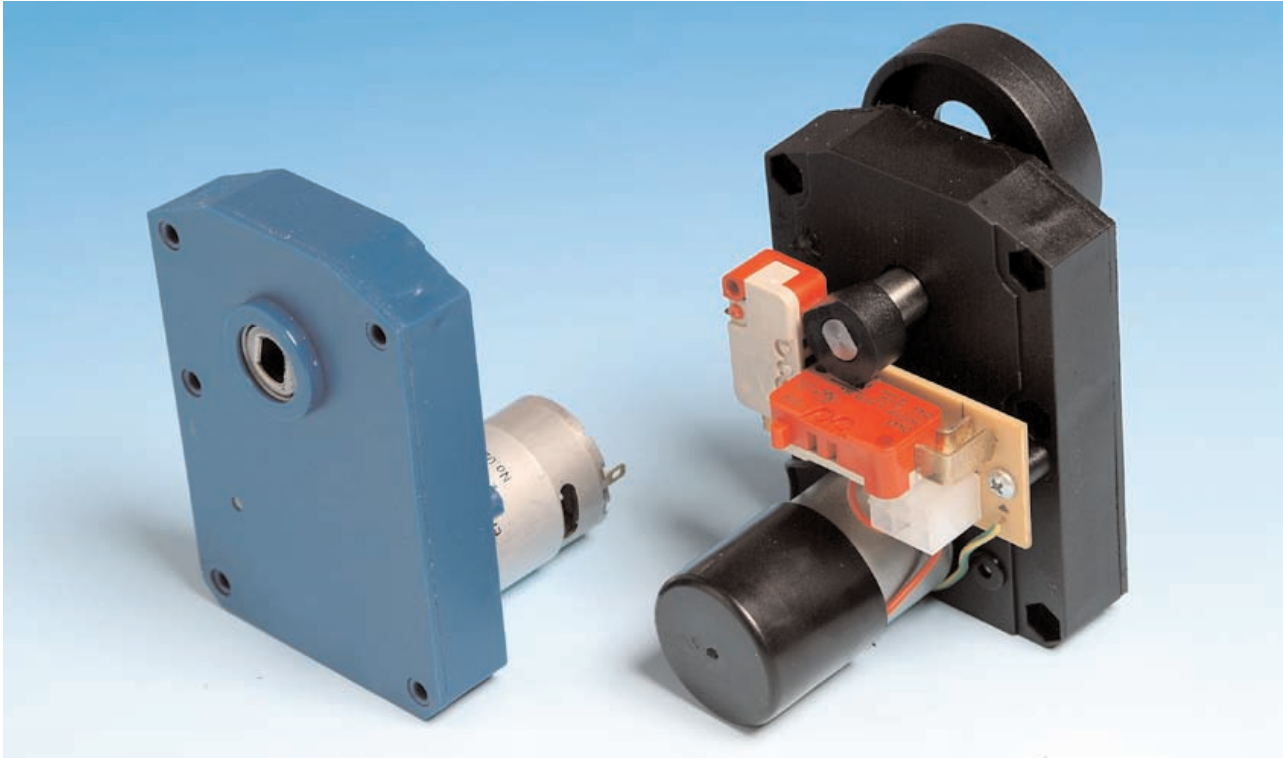


GEARMOTOR K 932



GENERAL CHARACTERISTICS

The gearmotor K 932 has been designed to satisfy the special requirement of a product that can perform precise operations with the possibility of controlling its movement even under heavy load circumstances.

TYPICAL APPLICATIONS

Vending machines of snacks, drinks and various products

CONSTRUCTIVE CHARACTERISTICS

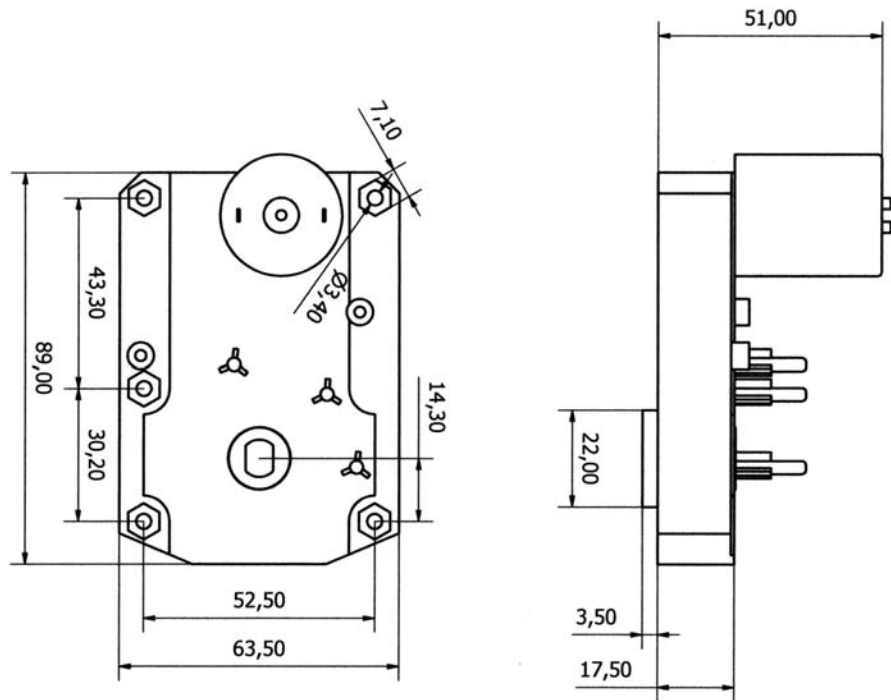
- **Reduction gear.**

The K 932 reduction gear case is made of plastic with fastening holes for the assembly and the control systems. The kinematical gear chain is made of special thermoplastic materials and sintered steel that guarantee a silent and the reliable operation.

- **DC motors for "intermittent duty".**

The DC gearmotors K 930 use DC brush and permanent magnet motors for 12 and 24 V power supply. These motors are of two-way operation type and they require the respect of the intermittent duty operation times.

DESIGN AND OVERALL DIMENSIONS



USEFUL INFORMATION

- **Room temperature.**

Our gearmotors and components lubricating system allows the most different applications because our standard motors can operate at room temperatures between - 5° and +40° C.

- **Drive shaft.**

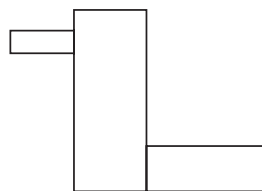
Thanks to the available wide range of drive shafts, it is possible to choose the more suitable one according to the different requirements, also for double application. See below the positioning diagram and the corresponding useful initials for element identification.

N.B. The shaft direction of rotation must always be considered by looking the reduction gear from the opposite motor side.

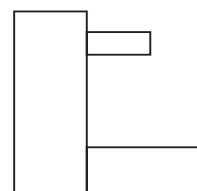
rotation
view



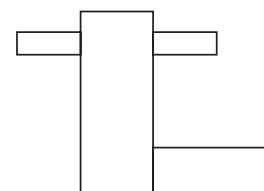
X model



Z model



Y model



TECHNICAL DATA

- **Drive system with no shaft.**

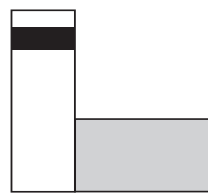
Our standard product range includes one model without drive shaft (SA) provided with a through hole that allows the direct connection to your attachment. See picture below.

N.B. The shaft direction of rotation must always be considered by looking the reduction gear from the opposite motor side.

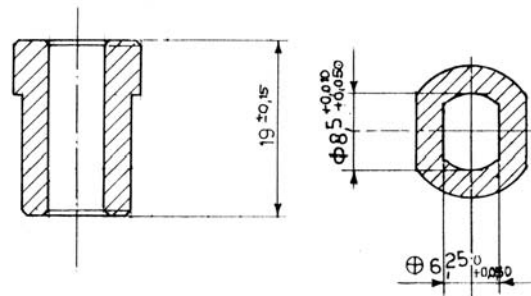
rotation
view



SA model (without shaft)



Shape and dimensions of through-hole seat



- **Available on request:**

Motor protection cover
Electronic card with one incorporated rotation control micro-switch
Rotation control micro-switch
Motor with Encoder for rotational speed control
Reduction gear case made of fireproof material

- **Customized models**

Customized gearmotors can be produced by special quantity orders

RPM at 24 V	Maximum torque in Nm
10	8,0

Other models with different RPMs are available on request.