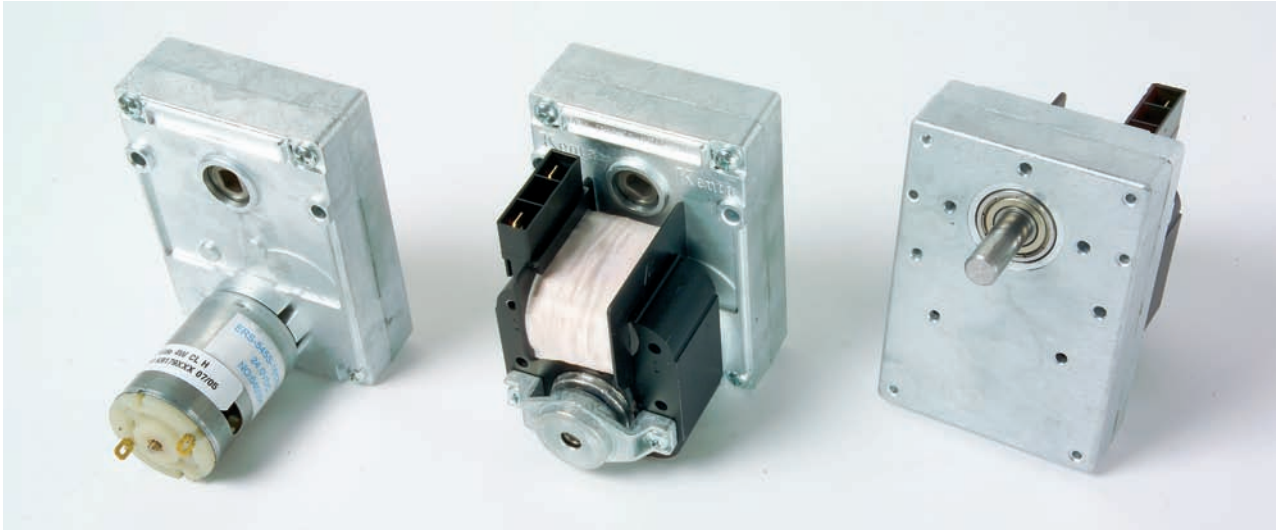


GEARMOTOR K 917



GENERAL CHARACTERISTICS

The wide range of the gearmotors K 917 is available with pole-changing AC motors and with permanent magnet DC motors. The connection between motor and reduction gear is obtained through a helical toothing gear on the motor shaft, which is positioned through double spherical self-aligning bushings or ball bearings that guarantee precision of movement and silent operation. The innovatory project, the production equipments and the tests performed on the production line allow obtaining reliable and highly performing products. The construction is similar to the K911 gearmotor (see catalogue). The elements are oversized to guarantee high stress resistance.

TYPICAL APPLICATIONS

Pallet heaters
Recreation products

Professional spit roasters
Mixers

Gyros roasters
Industrial actuators

CONSTRUCTIVE CHARACTERISTICS

- **Reduction gear.**

The reduction gear case is made of Zn + Al + Mg alloy pressure die-casting and it is provided with assembly fasteners. The kinematical gear chain consists of: helical toothing motor shaft, fast gears made of special plastic and slow gears made of sintered steel. This system guarantees high reliability so that the gearmotors K 917 can be used both in cold and warm environments (ex. refrigerators or ovens). The reduction gear case is provided with 2 through fastening holes and 7 threaded fastening holes with max. 4 mm thread depth.

- **AC motors.**

The AC gearmotors K 917 use a wide range of single-phase asynchronous two poles motors with shading coils and pre-set direction of rotation. The motor width and height are fixed (61 x 61 mm) while the thickness is available in 5 sizes: 12 - 16 - 20 - 30 - 40 mm. The coil windings are produced by an automatic plant, which is provided with a wire-stabilized tensioning control device. 6,3 x 0,8 Faston connectors are used for the electric connections and are applied by means of the innovative insulator perforation weld-less system (Amtronics system, UL approved) to prevent bad contacts. Available voltage and frequency: 24 to 240 V, 50 and 60 Hz.

- **DC motors for "intermittent duty".**

The DC gearmotors K 917 use DC brush and permanent magnet motors for 12 and 24 V power supply and 5 to 30 W absorbed powers. These two-way operation motors can be provided with one Encoder or Hall probe for revolving speed control.

THE OPERATION

- **AC model for “continuous duty”.**

When the gearmotor operates in continuous duty, the motor is provided with an impedance self-protected winding coil; this feature allows the motor to maintain a throughout correct operation without any damage, even in case of jamming (external temperature and the insulation class must be complied with).

- **AC model for “intermittent duty”.**

When the gearmotor is used for short time operations, it is possible to use a motor having the same thickness as the continuous duty motor but a more than double performance.

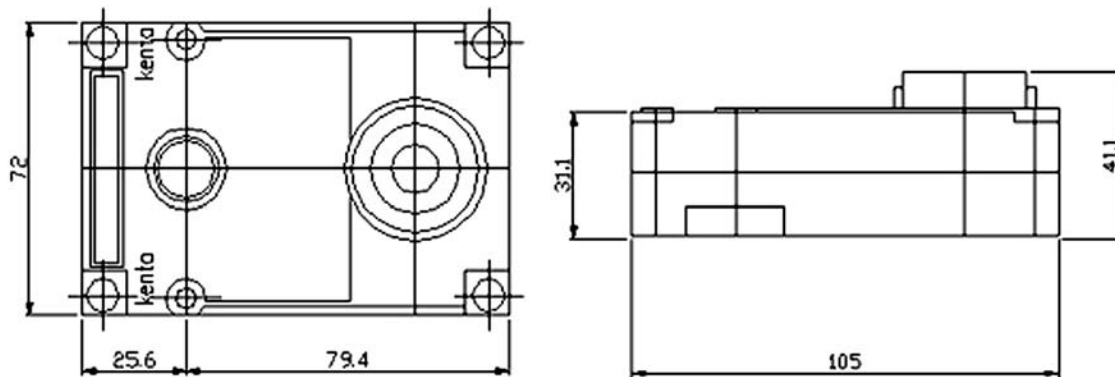
The operating times of these motors must be complied with: for standard models the maximum operation time (ON) is 6-10 seconds and the minimum pause time (OFF) is 14-10 seconds.

- **AC model with Radial Hook (GR) for “continuous or intermittent duty”.**

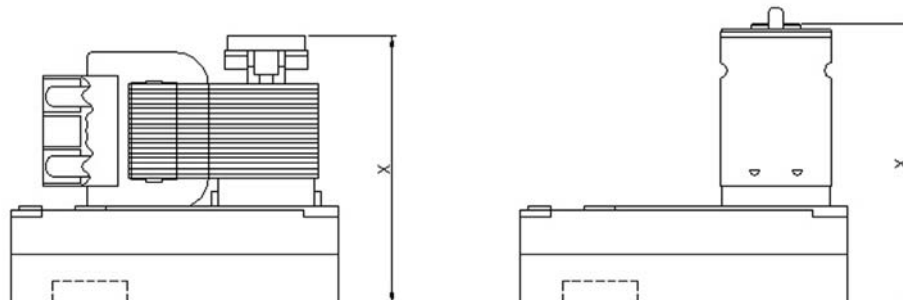
This gearmotor, which has identical electric characteristics as the above mentioned one, is provided with a mechanical brake that instantly stops the movement when the power supply is switched off and it allows stopping the reduction gear torque, if any. This system is proof against bad environmental conditions such as dusty and humid places and its design assures a large number of operations.

DESIGN AND OVERALL DIMENSIONS

- **Widths**



- **Heights and depths**



- The AC gearmotor height X depends on the used stator and varies between 67 mm and 108 mm for the tallest radial hook model.

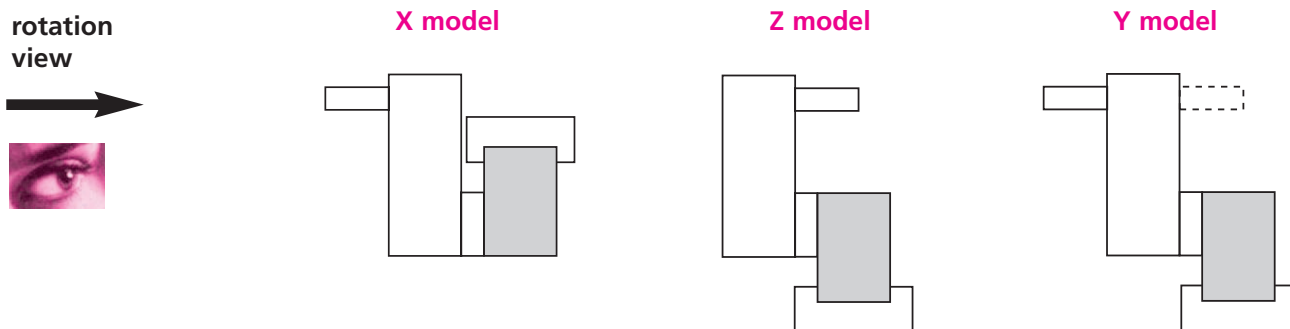
- The DC gearmotor height X depends on the used stator and varies between 65 mm and 101 mm.

USEFUL INFORMATION

- **Drive shafts.**

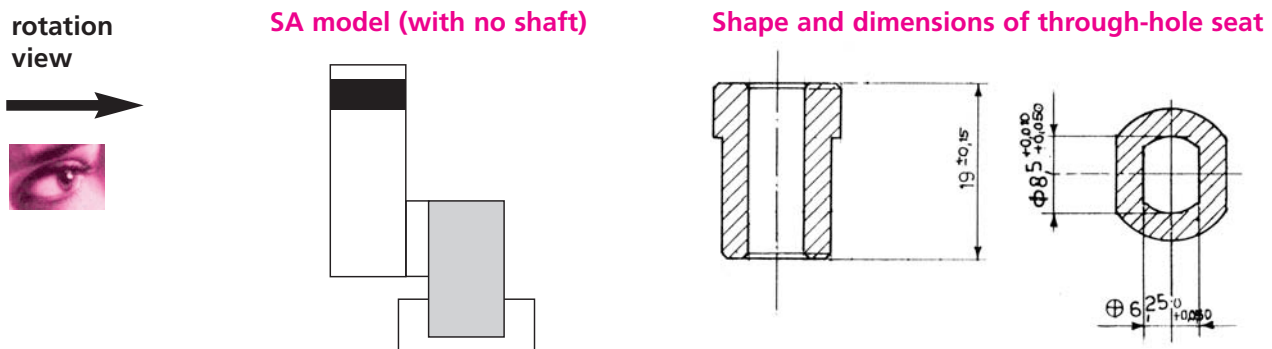
Thanks to the available wide range of drive shafts, it is possible to choose the more suitable one according to the different requirements, also for double application. See below the positioning diagram and the corresponding useful initials for element identification.

N.B. The shaft direction of rotation must always be considered by looking the reduction gear from the opposite motor side.



- **Drive system with no shaft.**

Our standard product range includes one model without drive shaft (SA) provided with a through hole that allows the direct connection to your attachment. See picture below.



- **Room temperature.**

Our gearmotors and components lubricating system allows the most different applications because our standard motors can operate at room temperatures between - 5° and +80° C.

Choose the right motor type to prevent over-temperature.

- **Available on request:**

AC models are available with double motor on the same axis for two-way operation.

Motor with temperature protecting device (in special seat between flow generator, fillet and coil)

Model with reduction gear provided with ball bearing to improve the sealing action by external loads.

High temperature models – Low-noise models - Power supply cables

Coils manufactured with UL approved insulation system - Motors with cooling fan

- **Customized models.**

Customized models can be produced by special quantity orders.

TABLE OF PERFORMANCES

The data given in the table below are only indications expressed in Nm and they refer to the standard models maximum torque.

AC MODEL								DC MODEL		
	H12 motor		H20 motor		H30 motor		H40 motor			
RPM	continuous	contin.	intermit. 30%	contin.	intermit. 30%	contin.	intermit. 50%	RPM 24 VDC	intermittent 30%	
1	10	38	n.d.	n.d.	n.d.	n.d.	n.d.	1,6	n.d.	
1,5	5	15	n.d.	26	n.d.	n.d.	n.d.	2,5	n.d.	
2	4	8,5	35	31	n.d.	52	n.d.	3,5	25	
2,5	3,5	14	30	28	n.d.	39	n.d.	4	23	
5	2,3	5	15	8	30	24	27	8,5	15	
8,5	1,5	3	10	9	20	15	20	14	9	
12	1,2	2,2	8	6	11	10	16	20	8,0	
20	0,9	1,5	6	4	6,5	7,5	10	33	5,0	
33	0,4	1	4	2	6	3	6,2	55	3	
50	n.a.	n.a.	n.a.	n.a.	n.a.	n.a.	n.a.	85	n.a.	

Legend: n.a. = Not available or available on request.

Other models with different RPMs are available on request.