

ACCESSORIES FOR GEARMOTOR K 911



GENERAL CHARACTERISTICS

To complete our offer of K911gearmotors, we have several solutions of plastic or rubber protection covers available for different applications.

TYPICAL APPLICATIONS

Protection of AC and DC motors

CONSTRUCTIVE CHARACTERISTICS

- **Cover for gearmotors**

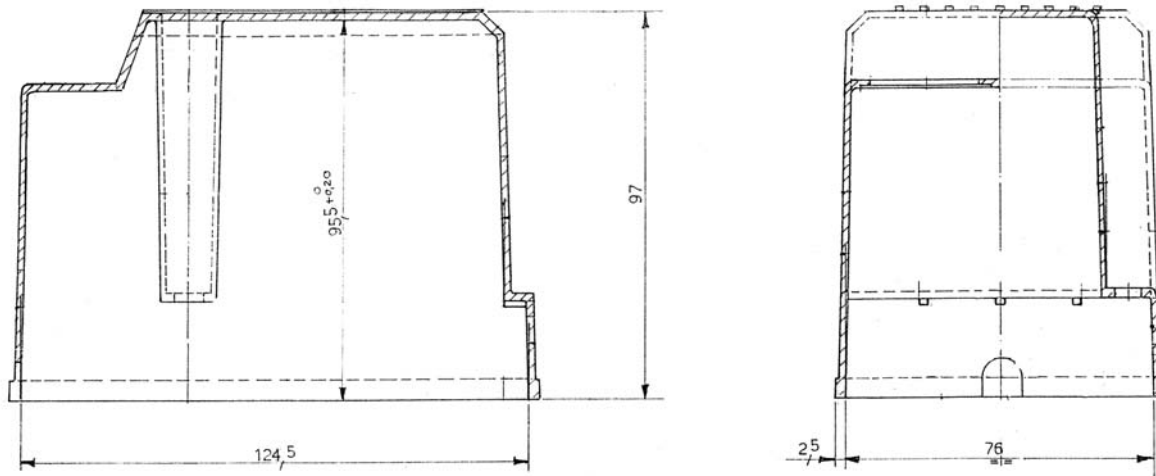
These covers are made of heat-resistant plastic and they totally protect the gearmotor, either with AC or DC motor, from external agents, such as dust or condensate. They are available with different power supply cable exit holes or switch insertion holes.

- **Cover for DC motors**

These covers are made of plastic or rubber and they are used to protect the DC motor from external agents, such as dust or condensate.

DESIGN AND OVERALL DIMENSIONS

COVERS FOR GEARMOTORS



COVERS FOR DC MOTOR

