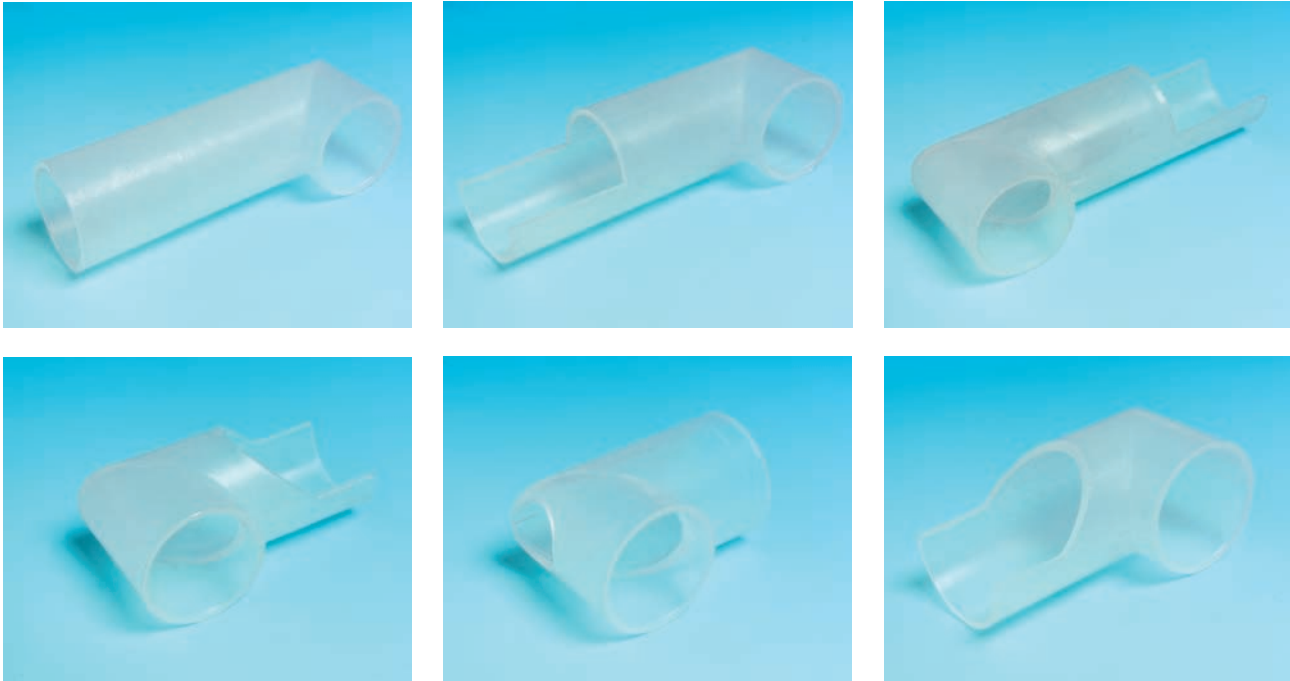


## **ACCESSORIES FOR SOLUBLE PRODUCTS CANISTERS**



### **GENERAL CHARACTERISTICS**

The pipes for Kenta's soluble products canisters are designed to convey the product dropped into the mixing units without contact with external agents. The pipes are made of neutral colour polypropylene in compliance with the regulations concerning food-grade products.

### **TYPICAL APPLICATIONS**

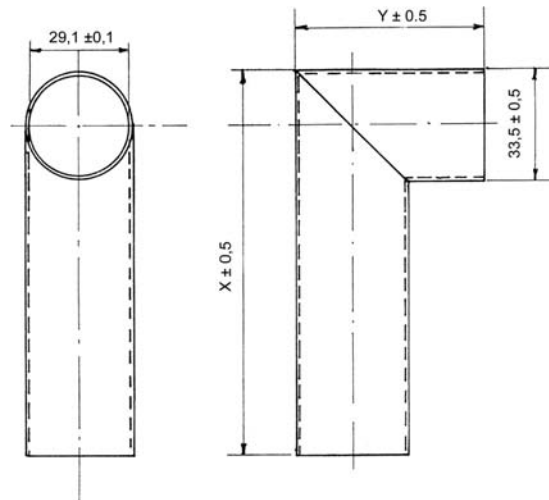
**Vending machines of warm and cold drinks, vending sector.**

### **CONSTRUCTIVE CHARACTERISTICS**

- **Pipes.**

For an even more complete conveying of the soluble products dispensed from the canisters (see catalogue CANISTERS FOR SOLUBLE PRODUCTS), Kenta has designed a range of pipes in different lengths and (\*) shapes to better split the product drop (right and left). There are also models with a vapour suction hole, which is useful to prevent lumps that may be formed by the vapour accumulation contacting the product.

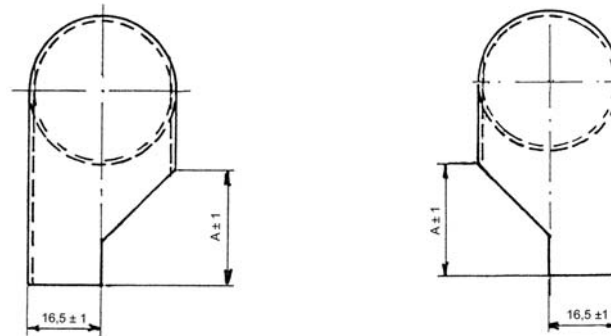
## DESIGN AND OVERALL DIMENSIONS



- The X dimension of the different pipes can be: 59 mm - 72 mm - 112 mm..
- The Y dimension of the different pipes can be: 41 mm-55 mm.

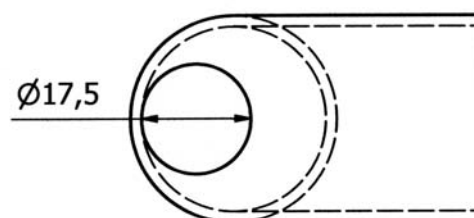
(\*) **RIGHT-HAND** splitting

(\*) **LEFT-HAND** splitting



- The A dimension of the different pipes can be: 26 mm - 35 mm - 3 6.5 mm.
- Available with right-hand or left-hand shape to facilitate the machine assembly.

Vapour suction hole



- Vapour suction hole available on request for all models.